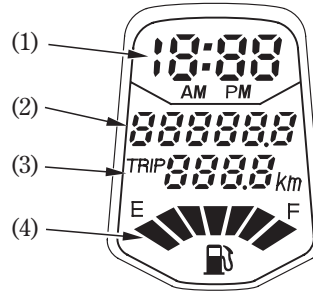




### Initial Display

When the ignition switch is turned ON, the display will temporarily show all the modes and digital segments so you can make sure the liquid crystal display is functioning properly.

Both digital clock and tripmeter will reset if the battery is disconnected.



- (1) Digital clock
- (2) Odometer
- (3) Tripmeter
- (4) Fuel gauge

