

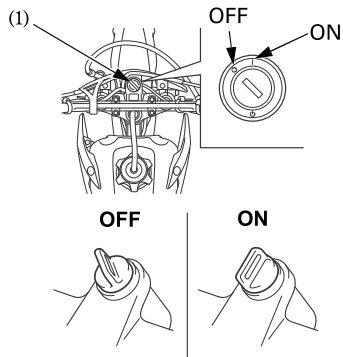
ESSENTIAL INDIVIDUAL COMPONENTS

IGNITION SWITCH

The ignition switch (1) is located in front of handlebar.

The ignition switch is used to prevent unauthorized use of the motorcycle. Before riding, insert the key and turn it to the | (ON) position.

After parking the motorcycle, remove the key.



(1) Ignition switch

Key Position	Function	Key Removal
○ (OFF)	The engine cannot be operated.	Key can be removed
(ON)	With the transmission in neutral, the engine can be started.	Key cannot be removed