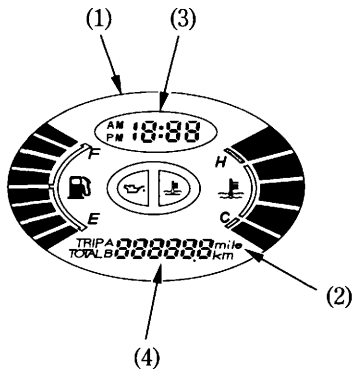


Initial Display

When the ignition switch is turned ON, the multi-function display (1) will show from bottom up in sequence. Thereafter, it will temporarily show all the modes so that you can make sure the liquid crystal display is functioning properly.

The unit "mile" (2) will be displayed only for E type.

Digital clock (3) and tripmeter (4) will reset if the battery is disconnected.



- (1) Multi-function display
- (2) "mile"
- (3) Digital clock
- (4) Tripmeter