

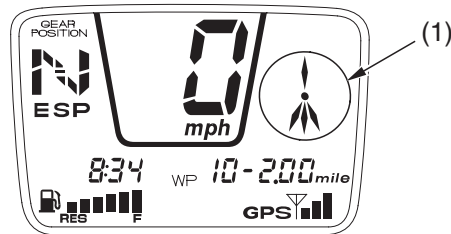


GPS Mode

Direction to Waypoint Display

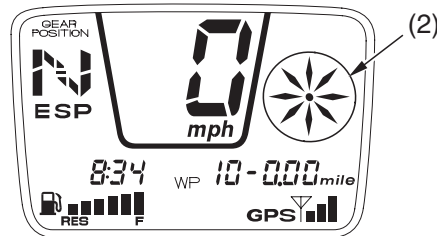
The direction to waypoint display (1) uses an electronic arrow to point to your destination. The display has 16 possible directions.

While operating in reverse, GPS will continue to direct you as if your ATV is still moving in a forward direction. However, the system will calculate an accurate distance and display a directional arrow to the selected waypoint.



(1) direction to waypoint display

When your ATV approaches within about 16 feet of the waypoint, the direction to waypoint display will change from a directional arrow to an eight-point star (2) as shown in the illustration.



(2) eight-point star