



Engine Oil & Filter

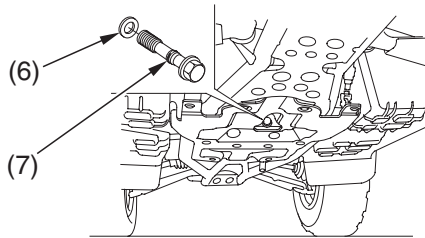
- Pour the drained oil into a suitable container and dispose of it in an approved manner (page 180).

NOTICE

Improper disposal of drained fluids is harmful to the environment.

Add Engine Oil:

- Check that the drain plug sealing washer (6) and O-ring (7) are in good condition. If necessary, replace them.



(6) drain plug sealing washer

(7) O-ring

- Apply a thin coat of engine oil to the O-ring.
- Reinstall the engine oil drain plug and tighten it to the specified torque:
25 N·m (2.5 kgf·m , 18 lbf·ft)
- Fill the crankcase with the recommended grade oil approximately:
2.9 ℓ (3.1 US qt , 2.6 Imp qt)
- Reinstall the oil filler cap.
- Start the engine and let it idle for 3–5 minutes.
- Stop the engine, wait 2–3 minutes and check the oil level. Make sure the oil is between the upper and lower level marks on the dipstick. If necessary, add more oil but do not overfill.
- Reinstall the oil filler cap and dipstick.
- Check that there are no oil leaks.
If a torque wrench is not used for installation, see your Honda dealer as soon as possible to verify proper assembly.