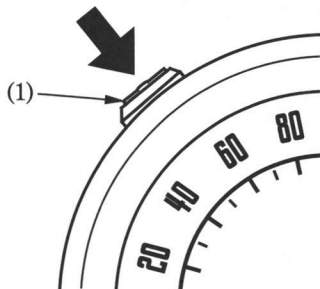


The immobilizer system has such a function that keeps the immobilizer system (HISS) indicator blinking at 2 second intervals for 24 hours. This blinking function can be turned on or off.

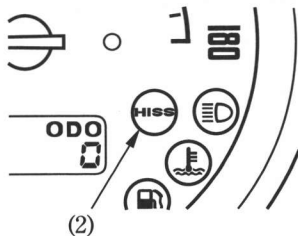
To alter the blinking function:

1. Turn the ignition switch ON.
2. While pressing the odometer/tripmeter/digital clock select and reset button (1), simultaneously turn the ignition switch OFF when the odometer/tripmeter/digital clock display is odometer (page 23).

The immobilizer system (HISS) indicator (2) instantly flash, the function is enabled.



(1) Odometer/tripmeter/digital clock select and reset button



(2) Immobilizer system (HISS) indicator