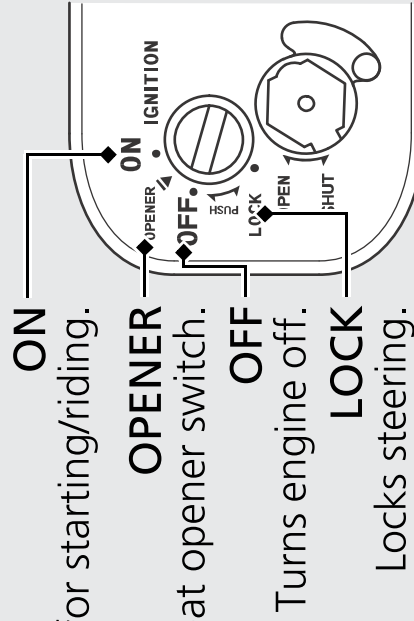


Ignition Switch

Switches the electrical system on/off, locks the steering, and operates the fuel lid and seat opener switch.

- ▶ Key can be removed when in the OFF or LOCK position.



Turns electrical system on for starting/riding.

Operates the fuel lid and seat opener switch.

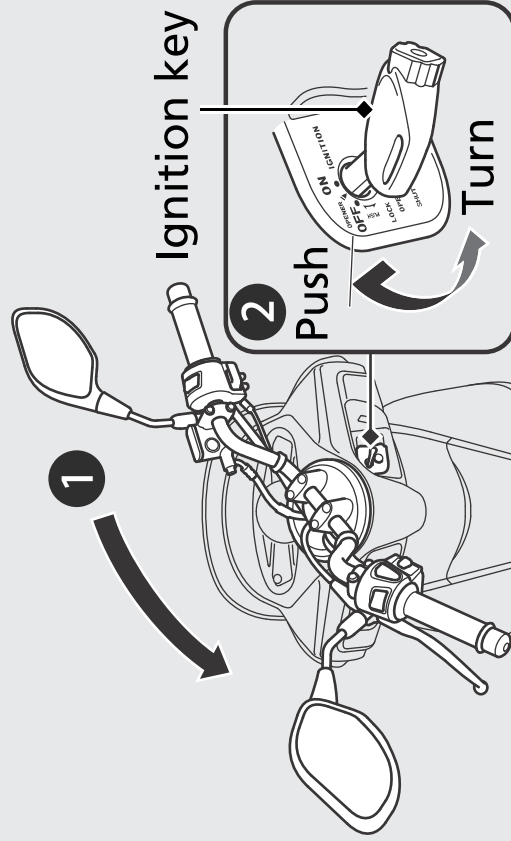
Turns engine off.

Locks steering.

Steering Lock

Lock the steering when parking to help prevent theft.

A U-shaped wheel lock or similar device is also recommended.



Locking

- 1 Turn the handlebar all the way to the left.
- 2 Push the key down, and turn the ignition switch to the LOCK position.
 - ▶ Jiggle the handlebar if the lock is difficult to engage.
- 3 Remove the key.

Unlocking

Insert the key, push it in, and turn the ignition switch to the OFF position.