

Pour half the required amount of recommended fork fluid in the fork leg.

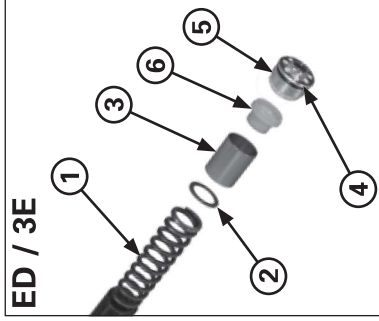
**Specified fork fluid:**

**ED / 3E:** Tech OJ 01

**2E / 4E:** Showa SS05

Pump the fork tube slowly 8-10 times.  
Pour additional fluid to the specified capacity.

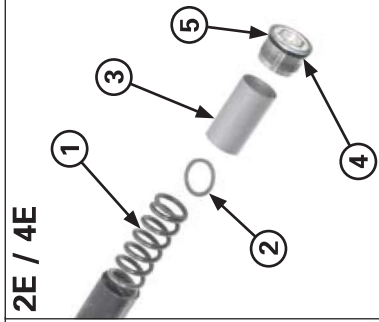
	ED / 3E	2E / 4E
<b>Oil level</b>	100 mm (3.9 in)	87 mm (3.9 in)
<b>Oil capacity</b>	410 cc (13.9 US oz) (14.4 Imp oz)	405 cc (13.7 US oz) (14.3 Imp oz)



- (1) FORK SPRING
- (2) SPRING SEAT
- (3) DISTANCE COLLAR
- (4) O-RING
- (5) FORK BOLT

Install the fork spring, spring seat and distance collar.

Apply recommended fork fluid to the new O-ring, then screw the fork bolt into the fork tube.



- (1) FORK TUBE
- (2) TOP BRIDGE

**Installation**

Install the fork leg.

Raise the fork through the bottom bridge and top bridge.

Tech (ED/3E)

Place the fork tubes in the top clamp level as shown in the picture.

Showa (2E/4E)

Place the fork tubes in the top clamp. The fork tubes should be in the first slot related top clamp.