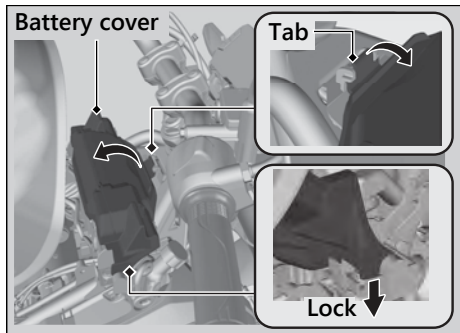
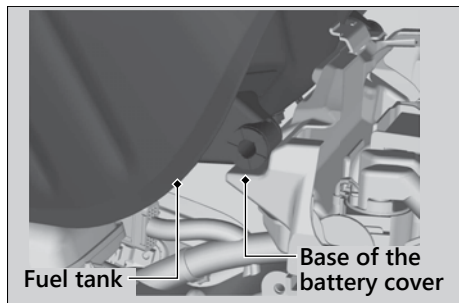


6. Pull the tab of the battery cover and open it.  
► After the battery cover is opened, push down the hinge part to lock it.



7. Mount the fuel tank on the base of the battery cover.



## Installation

1. Install the fuel tank in the reverse order of removal.
2. Install the collars and mounting bolts.
3. Tighten the mounting bolts.

**Torque:** 9 lbf·ft (12 N·m, 1.2 kgf·m)