

Gauges, Indicators & Displays

Presetting the Shift Indicator and Selecting the Display

You may select the rpm activation point (in the 2,000 rpm to 13,000 rpm range) for the shift indicator and select the display used to alert you.

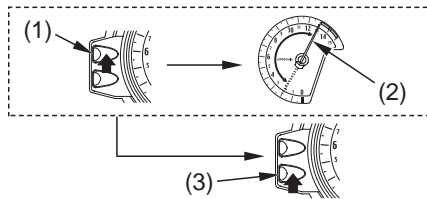
To set the shift indicator:

1. Press and hold control button A (1), then turn on the ignition switch. Keep control button A pressed in until the initial display is completed. The tachometer needle moves to its preset position.
2. Each time you press control button A, the tachometer needle (2) will move by an increment of 500 rpm.

By pushing and holding control button A for more than 1 second, the tachometer needle will move by an increment of 1,000 rpm.

When the needle exceeds the allowable range, it will automatically return to 2,000 rpm.

After completing the selection, press control button B (3), and proceed to the selecting the display for the indicator.



- (1) control button A
(2) tachometer needle
(3) control button B