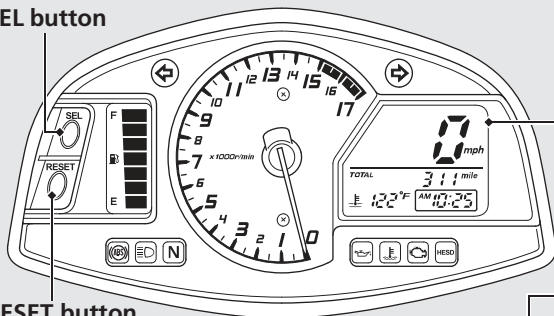


Instruments (Continued)

SEL button



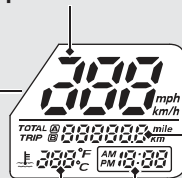
RESET button

Coolant temperature gauge ()

Display range: 95 °F (35 °C) to 270 °F (132 °C)

- Below 94 °F (34 °C): " - - - " displays
- Between 251 °F (122 °C) and 269 °F (131 °C):
 - High coolant temperature indicator lights
 - Coolant temperature gauge (flashing digits)
- Above 270 °F (132 °C):
 - High coolant temperature indicator lights
 - " 270 " (°F) / " 132 " (°C) flashes

Speedometer



**Clock
(12-hour display)**

- u Even if the engine coolant temperature is low, the cooling fan may start running when you rev up the engine. This is normal.