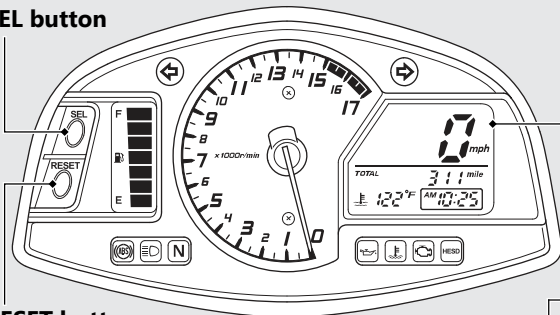


## Instruments (Continued)

### SEL button



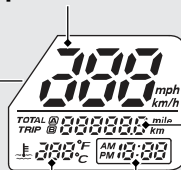
### RESET button

### Coolant temperature gauge ( )

Display range: 95 °F (35 °C) to 270 °F (132 °C)

- Below 94 °F (34 °C): "—" displays
- Between 251 °F (122 °C) and 269 °F (131 °C):
  - High coolant temperature indicator lights
  - Coolant temperature gauge (flashing digits)
- Above 270 °F (132 °C):
  - High coolant temperature indicator lights
  - "270" (°F) / "132" (°C) flashes

### Speedometer



### Clock (12-hour display)

- ▶ Even if the engine coolant temperature is low, the cooling fan may start running when you rev up the engine. This is normal.