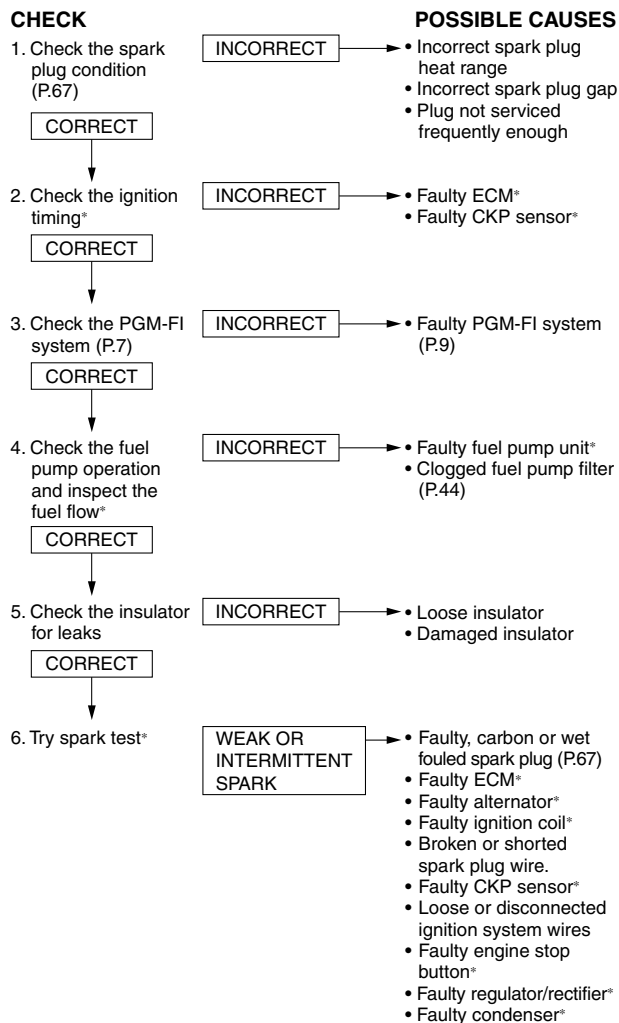
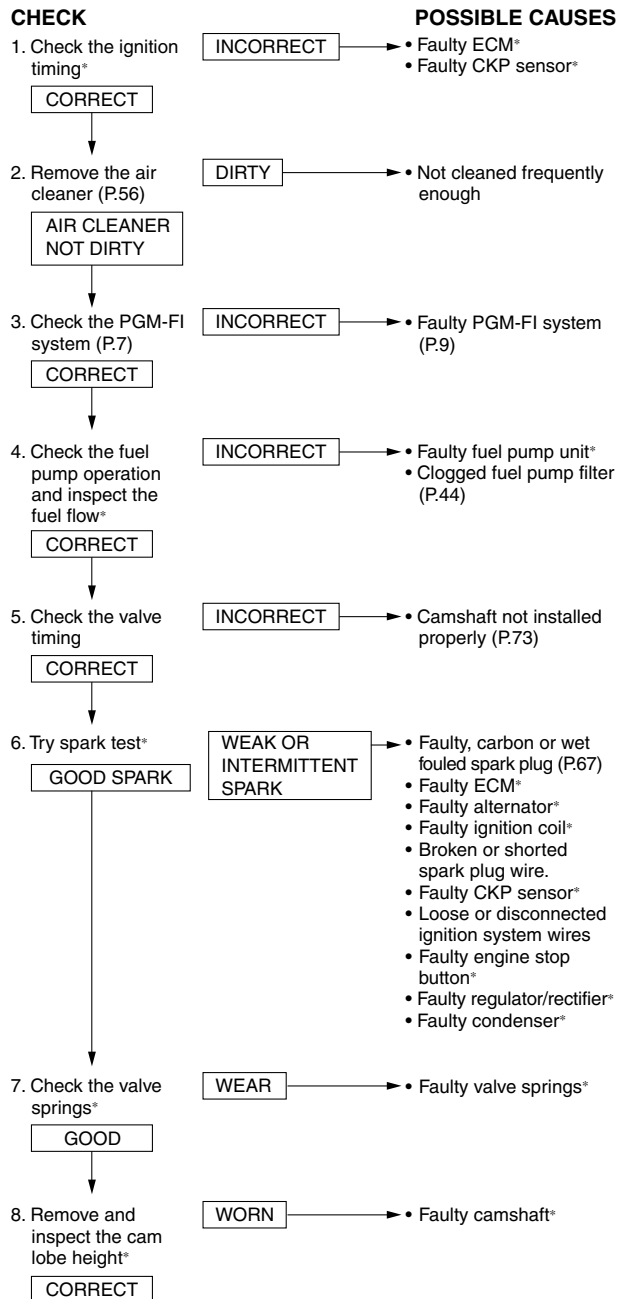


Troubleshooting

POOR PERFORMANCE AT LOW AND IDLE SPEED



POOR PERFORMANCE AT HIGH SPEED



POOR HANDLING

Steering is heavy

- Steering stem adjusting nut too tight*
- Damaged steering head bearings
- Faulty HPSD*

Either wheel is wobbling

- Excessive wheel bearing play
- Bent rim
- Improperly installed wheel hub
- Excessively worn swingarm pivot bearings
- Bent frame

The motorcycle pulls to one side

- Front and rear wheels not aligned
- Bent fork
- Bent swingarm
- Bent axle shaft
- Bent frame