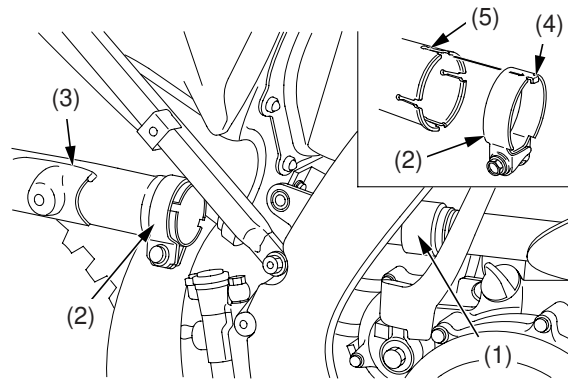


Exhaust Pipe/Muffler

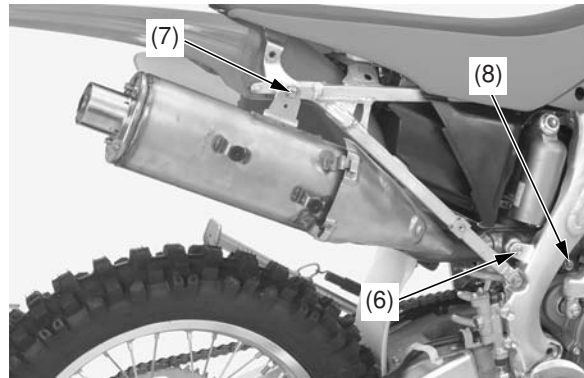
Muffler Installation

1. Install a new gasket (1) on the exhaust pipe.
2. Install the muffler clamp (2) by aligning the tab (4) of the muffler clamp with the cut-out (5) of the muffler (3).
3. Install the muffler.



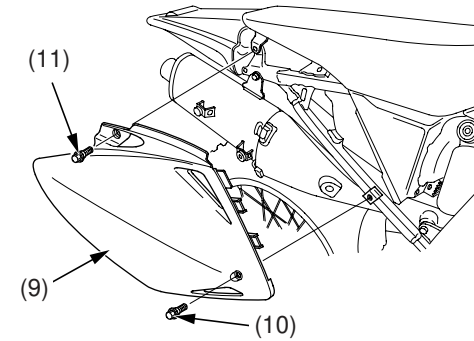
- (1) gasket
(2) muffler clamp
(3) muffler
(4) tab
(5) cut-out

4. Install the front muffler mounting bolt (6), rear muffler mounting bolt/washer (7) and loosely tighten them.
Tighten the front muffler mounting bolt and rear muffler mounting bolt to the specified torque:
26 N·m (2.7 kgf·m, 19 lbf·ft)
5. Tighten the muffler clamp bolt (8) to the specified torque:
21 N·m (2.1 kgf·m, 15 lbf·ft)



- (6) front muffler mounting bolt
(7) rear muffler mounting bolt/washer
(8) muffler clamp bolt

6. Install the right side cover (9) and side cover bolt (10).
7. Install the seat bolt (11) and tighten it to the specified torque:
26 N·m (2.7 kgf·m, 19 lbf·ft)



- (9) right side cover
(10) side cover bolt
(11) seat bolt