

Vehicle Identification

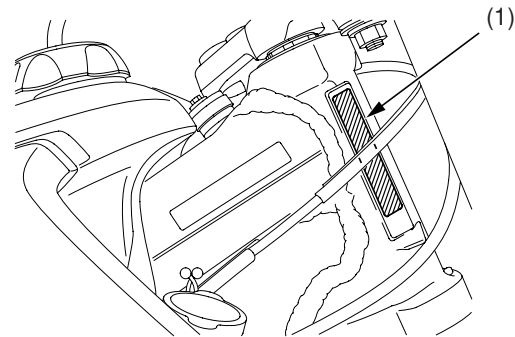
Serial Numbers

The VIN and engine serial numbers are required when you register your CRF. They may also be required when ordering replacement parts.

The VIN number (1) is stamped on the right side of the steering head.

VIN _____

RIGHT SIDE

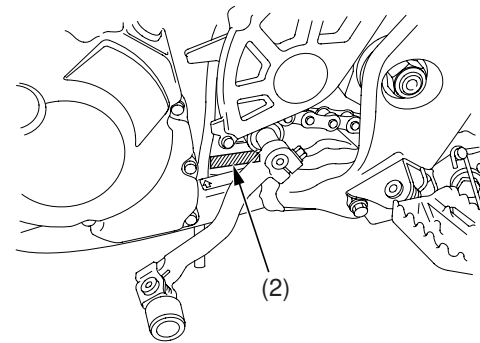


(1) VIN

The engine number (2) is stamped on the left crankcase.

ENGINE No. _____

LEFT SIDE



(2) engine number