

Tires

Tire Service Life

The service life of your tires is dependent on many factors, including, but not limited to, riding habits, road conditions, vehicle loading, tire pressure, maintenance history, speed, and environmental conditions (even when the tires are not in use).

In addition to your regular inspections and tire pressure maintenance, it is recommended that you have annual inspections performed once the tires reach 5 years old. It is also recommended that all tires be removed from service after 10 years from the date of manufacture, regardless of their condition or state of wear.

The last four digits of the TIN (tire identification number) (1) are found on the sidewall of the tire, and indicate the date of manufacture.

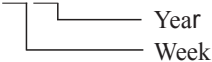
Tire Identification Number (TIN)

The tire identification number (TIN) is a group of numbers and letters that look like the following example. The TIN is located on the sidewall of the tire.

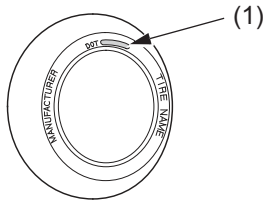
DOT xxxx xxxx 22 07
(2) (3) (4)

DOT – This indicates that the tire meets all requirements of the U.S. Department of Transportation.

- (2) x x x x – Factory code
- (3) x x x x – Tire type code
- (4) 22 07 – Date of manufacture



TIRE LABELING EXAMPLE



(1) tire identification number (TIN)