

## Switches (Continued)

### Left handlebar

GL1800BD/D/DA

#### Headlight dimmer switch

- ▲ / ▼ : High beam
- ▼ / ▲ : Low beam
- ⏏ / PASS : Flashes the high beam headlight.

#### VOL lever

Push up or down to adjust the audio system volume.

➡ P. 71

#### (Voice control) switch

- Press to receive, reject or end a call. ➡ P. 102
- Starts Siri® if Apple CarPlay is available. ➡ P. 101

#### Horn button

#### Turn signal switch

- The turn signal will automatically stop when you complete the turn.
- When used for a lane change, the turn signal automatically stops after 7 seconds or after riding 131 yards (120 m).
- ▶ You can manually cancel the turn signal by pressing the switch in.
- ▶ In some cases, the timing at which the turn signal stops is changed.
- ▶ Always use the recommended tires to ensure correct automatic cancellation operation.

**To enable or disable the turn signal automatic cancellation:** ➡ P. 28

#### 4-way key/ENT switch

- Press the 4-way key switch in the ▲ / ▼ / ◀ / ▶ directions to select the available choices.
- Press ENT switch to set your selection. ➡ P. 24

#### Windscreen adjusting lever

Push up or down to adjust the windscreen height. ➡ P. 134

#### (Home) switch

Press to return to the Home screen. ➡ P. 24

#### (Back) switch

Press to return to the previous screen. ➡ P. 24

#### (Source/Private Mode) switch

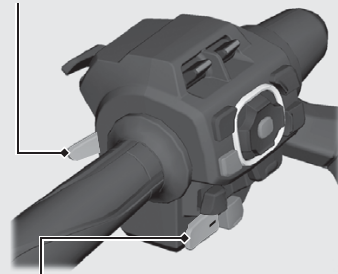
- Press to change the audio mode. ➡ P. 71
- Press and hold to enable/disable the private mode. ➡ P. 88

#### Walking Speed mode switch

Press to enter the Walking Speed mode. ➡ P. 115

#### Shift up switch (+)

- Pull to shift up a gear. ➡ P. 114
- Pull to move the motorcycle forward during the Walking Speed mode. ➡ P. 115



#### Shift down switch (-)

- Press to shift down a gear. ➡ P. 114
- Press to move the motorcycle backward during the Walking Speed mode. ➡ P. 115