

# Tire Pressure Monitoring System (TPMS)

## Low Tire Pressure Indicator

If the low tire pressure indicator flashes, check your tires as soon as possible. If the low tire pressure indicator lights constantly, one or more of your tires is significantly underinflated. You should stop and check your tires as soon as possible. For more information on temporary repair, see *If You Have a Flat Tire* on [page 230](#).

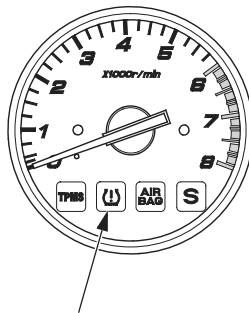
Check the air pressure when the tires are cold. This means the motorcycle has been parked for at least 3 hours. Add or release air, if needed, to match the recommended cold tire pressures on [page 202](#).

When the low tire pressure indicator flashes or lights, but you continue to ride, the low tire pressure indicator will go off in some cases. It is still necessary to check the air pressures of both tires after the tires cool. Air in the tires is expanded with heat.

If the low tire pressure indicator does not turn off after inflating the tires to the specified values, have your Honda dealer to check the system as soon as possible.

Riding on a underinflated tire causes the tire to overheat and can lead to tire failure.

Under-inflation also reduces fuel efficiency and tire tread life, and may affect the motorcycle's handling and stopping ability.



low tire pressure indicator