

Tire Pressure Monitoring System (TPMS)

Because tire pressure varies by temperature and other conditions, the low tire pressure indicator may turn on unexpectedly.

Please note that the TPMS is not a substitute for proper tire maintenance, and it is the rider's responsibility to maintain correct tire pressure, even if under-inflation has not reached the level of turning on the low tire pressure indicator.

For example, if you check and fill your tires in a warm area, then ride in extremely cold weather, the tire pressure will be lower than measured and could be underinflated and cause the low tire pressure indicator to turn on. Or, if you check and adjust your tire pressure in cooler conditions, and ride into extremely hot conditions, the tire may become overinflated. However, the low tire pressure indicator will not turn on if the tires are overinflated.

Tire Pressure Monitoring System (TPMS) Indicator

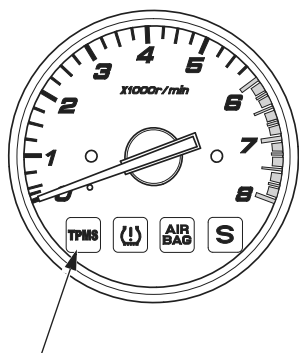
The tire pressure monitoring system (TPMS) indicator comes on and stays on if there is a problem with the tire pressure monitoring system.

If this happens, the system will shut off and no longer monitor tire pressure.

Have the system checked by your Honda dealer as soon as possible.

Also the TPMS indicator may light for the following reasons:

- Interference of other electronic devices by using the same radio frequency.
- Using replacement wheels not equipped with tire pressure sensors.



tire pressure monitoring system (TPMS) indicator