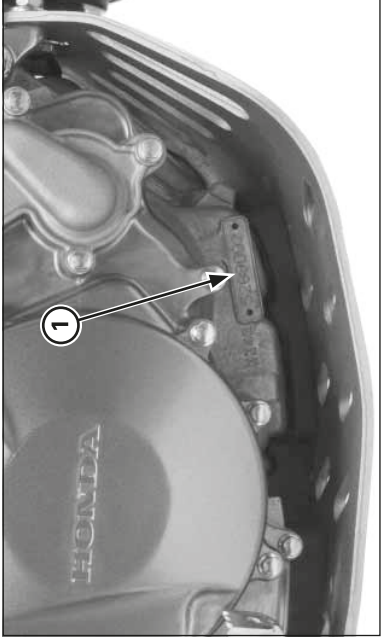


(1) FRAME NUMBER

Serial numbers

The Vehicle Identification Number (VIN) is stamped on the right side of the steering head.



(1) ENGINE NUMBER

The serial number of the engine is stamped on the lower right side of the crankcase.

MODEL	TYPE	FRAME No.	ENGINE No.
MRT 300 M	2ED	VTDND15B7ME000001	NN4E7100001
MRT 300 M	4ED	VTDNE0537ME000001	NN4E7100001