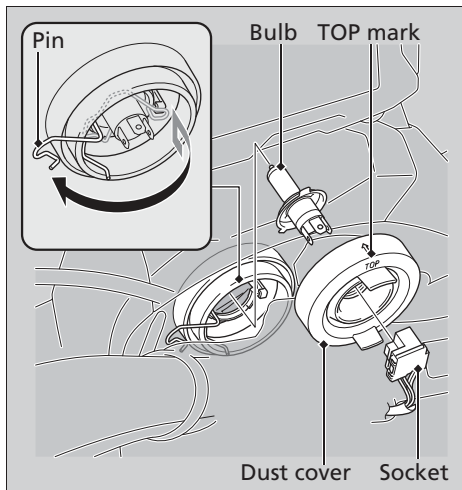


Headlight Bulb



1. Pull the socket off the bulb without turning it.
2. Remove the dust cover.
3. Press the pin down and pull out the bulb without turning it.
4. Install a new bulb and parts in the reverse order of removal.
 - Install the dust cover with its "TOP" mark facing up.

Do not touch the glass surface with your fingers. If you touch the bulb with your bare hands, clean it with a cloth moistened with isopropyl (rubbing) alcohol.