

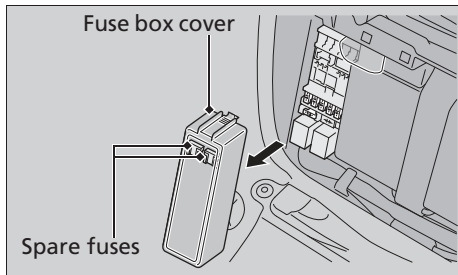
## Blown Fuse

Before handling fuses, see “Inspecting and Replacing Fuses.” ► P. 65

### Fuse Box Fuses

1. Open the luggage box. ► P. 50
2. Remove the maintenance lid. ► P. 74
3. Remove the fuse box cover.
4. Pull the fuses out with the fuse puller in the tool kit one by one check for a blown fuse. Always replace a blown fuse with a spare of the same rating.
  - Spare fuses are provided on the back of the fuse box cover.
5. Reinstall the fuse box cover.
6. Install the maintenance lid.
7. Close the luggage box.

NC700X



NC700XD

