

# Vehicle Identification

---

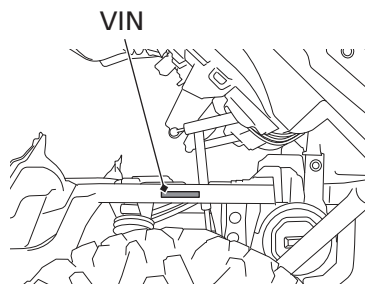
## Serial Numbers

The VIN and engine serial number may be required when ordering replacement parts. You may record these numbers in the Quick Reference section at the rear of this manual.

The VIN is stamped on the left side of the frame, located under the rear cargo bed.

The engine number is stamped on the upper side of the rear crankcase.

**UNDER CARGO BED  
LEFT SIDE**



**UNDER CARGO BED  
CENTER**

