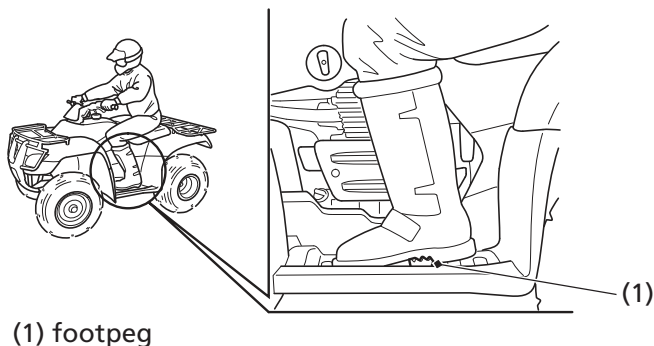


# Safe Riding Precautions

---



(1) footpeg

## Control Speed

Riding at excessive speed increases the chance of a crash. In choosing a proper speed, you need to consider the capability of your vehicle, the terrain, visibility and other operating conditions, plus your own skills and experience.

### 3 WARNING

Operating this ATV at excessive speeds increases your chances of losing control of the ATV, which can result in a crash.

Always go at a speed that is proper for your vehicle, the terrain, visibility and other operating conditions, and your experience.