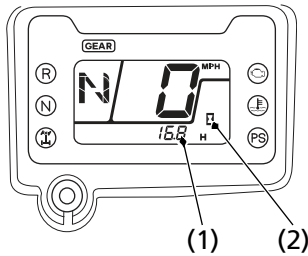


# Indicators & Displays

## Hourmeter

The hourmeter (1) shows accumulated hours while the ignition switch is ON (q) with the hourmeter mark (2). The hourmeter provides accurate service period information for initial and regular maintenance. The hourmeter locks at 99,999.9 when the read-out exceeds 99,999.9.



(1) hourmeter

(2) hourmeter mark