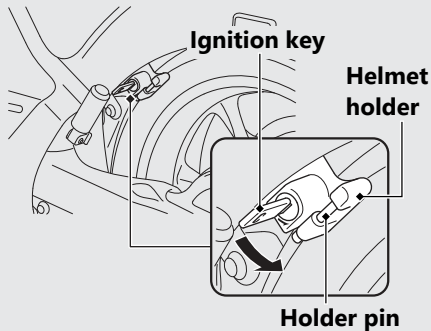


Storage Equipment

Helmet Holder

Helmet holder is located on the left side below the seat.



Unlocking

Insert the ignition key and turn it counterclockwise.

Locking

- 1 Hang your helmet on the holder pin and push it in to lock.
- 2 Remove the ignition key.
 - ▶ Use the helmet holder only when parked.

⚠ WARNING

Riding with a helmet attached to the holder can interfere with the rear wheel or suspension and could cause a crash in which you can be seriously hurt or killed.

Use the helmet holder only while parked. Do not ride with a helmet secured by the holder.