

### Tyres (Inspecting/Replacing)

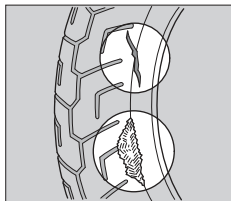
#### Checking the Air Pressure

Visually inspect your tyres and use an air pressure gauge to measure the air pressure before each off-road ride and whenever you return to pavement after riding off-road. If you only ride on pavement, check the pressure at least once a month or any time you think the tyres look low. Always check air pressure when your tyres are cold.

If you decide to adjust the tyre pressure for a particular off-road riding condition, make changes a little at a time.

#### Inspecting for Damage

Inspect the tyres for cuts, slits, or cracks that exposes fabric or cords, or nails or other foreign objects embedded in the side of the tyre or the tread. Also inspect for the bumps or bulges in the side walls of the tyres.



#### Inspecting for Abnormal Wear

Inspect the tyres for signs of abnormal wear on the contact surface.

