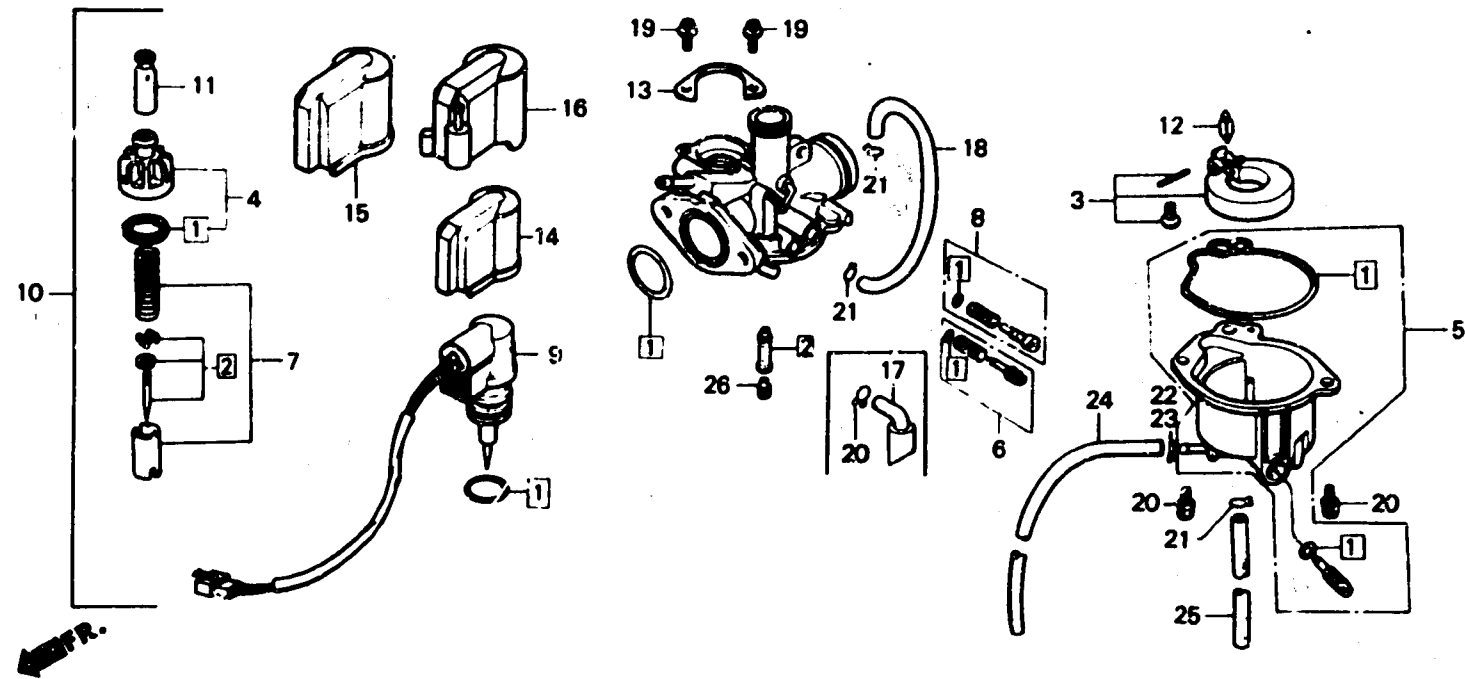


E-11

Carburetor



GY18 - E1100

Service Item	F.R.T.	Ref. No.	Part No.	Description	Reqd No.		Serial No.	Area Code
					SA50	SM		
		10	16046-GY1-961	BYSTARTER ASSY., AUTO	1	-	-	-IT
			16100-GY1-902	CARBURETOR ASSY. (PA25A) [E]	1	-	-	-E, PO
			16100-GY1-912	CARBURETOR ASSY. (PA35B) [E]	1	-	-	-B, F
			16100-GY1-932	CARBURETOR ASSY. (PA35C) [E]	1	-	-	-H
			16100-GY1-961	CARBURETOR ASSY. (PA40A) [E]	1	-	-	-IT
			16100-GY1-942	CARBURETOR ASSY. (PA35D) [E]	-	1	-	-
		11	16118-166-004	CAP, CABLE SEALING	1	1	-	-
		12	16155-GZ5-000	VALVE COMP., FLOAT	1	-	-	-IT
			16155-883-005	VALVE COMP., FLOAT	1	1	-	-B, E, F, H, PO
		13	16186-GJ2-004	PLATE, SET	1	1	-	-
		14	16190-GJ2-004	HOLDER, CAP	1	-	-	-IT
			16190-GR1-003	CAP, HOLDER	1	1	-	-B, E, F, H, PO
		15	16191-GM9-701	CAP, OUTER	1	1	-	-B, E, F, H, PO
		16	16191-GR1-711	HOLDER, CAP	1	-	-	-IT
		17	16199-GR2-701	TUBE, AIR VENT	1	1	-	-B, E, F, H, PO