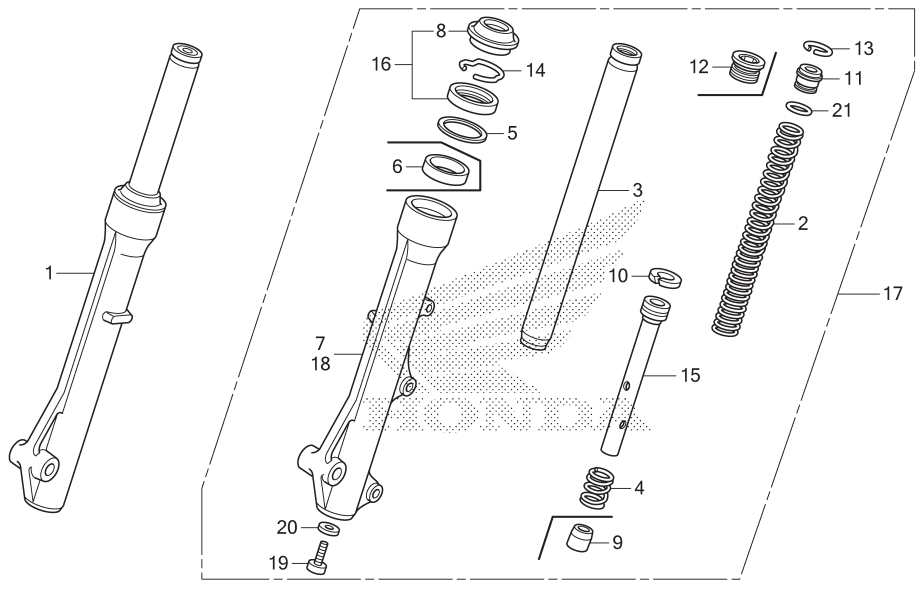


F-17

FRONT FORK



No. Ref.	L.O.N.	(Nomor ref. relatif) Deskripsi	F.R.T.
1	5111C3	FORK ASSY., FRONT :RIGHT.....	0,4
2	5111C5	SPRING, FRONT FORK :LEFT.....	0,6
	5111C6	SPRING, FRONT FORK :RIGHT.....	0,6
	5111C7	SPRING, FRONT FORK :KEDUA-DUANYA	0,9
		(4,6,10,15)	
3	5111G2	PIPE, FRONT FORK :LEFT.....	0,8
	5111G3	PIPE, FRONT FORK :RIGHT.....	0,8
	5111G4	PIPE, FRONT FORK :KEDUA-DUANYA	1,3
7	5111D2	CASE, BOTTOM :RIGHT.....	0,9
16	5111E7	SEAL SET, FRONT FORK :LEFT.....	0,9
	5111E8	SEAL SET, FRONT FORK :RIGHT.....	0,9
	5111E9	SEAL SET, FRONT FORK :KEDUA-DUANYA	1,5
17	5111C2	FORK ASSY., FRONT :LEFT.....	0,4
	5111C4	FORK ASSY., FRONT :KEDUA-DUANYA	0,5
18	5111D1	CASE, BOTTOM :LEFT.....	0,9
	5111D3	CASE, BOTTOM :KEDUA-DUANYA.....	1,5

No. Ref.	No. Part	Deskripsi	Jumlah			No. Seri	Kode Parts Catalog
			BEAT PGM-FI (ACH110) CBS(CBF) 2015(F)	STD(CSF) 2015(F)	ISS(CBT) 2015(F)		
1	51400-K25-902	FORK ASSY., R. FR.(CU) ...	1	1	1		
	51400-KZR-600	FORK ASSY., R. FR.(SW) ...	1	1	1		
2	51401-K25-902	SPRING, FR. FORK(CU)	2	2	2		
	51401-KZR-600	SPRING, FR. FORK(SW)	2	2	2		
3	51410-KZL-842	PIPE COMP., FR. FORK(CU) .	2	2	2		
	51410-KZL-A01	PIPE COMP., FR. FORK(SW) .	2	2	2		
4	51412-GN5-901	SPRING, REBOUND(SW)	2	2	2		
	51412-KWW-662	SPRING, REBOUND(CU)	2	2	2		
5	51412-KWB-601	RING, BACK UP(SW)	2	2	2		
	51413-KWW-662	RING, BACK UP(CU)	2	2	2		
6	51414-KWW-662	BUSH, GUIDE(CU)	2	2	2		
7	51420-K25-902	CASE, R. BOTTOM(CU)	1	1	1		
	51420-KZR-600	CASE, R. FR. BOTTOM(SW) ..	1	1	1		
8	51425-GN5-901	SEAL, DUST(SW)	2	2	2		
	51425-KWW-662	SEAL, DUST(CU)	2	2	2		
9	51432-KZL-842	PIECE, OIL LOCK(CU)	2	2	2		
10	51437-KWB-601	RING, PISTON(SW)	2	2	2		
	51437-KWW-662	RING, PISTON(CU)	2	2	2		
11	51454-KEV-881	SEAT B, SPRING(SW)	2	2	2		
12	51454-KWW-662	BOLT, FR. FORK(CU)	2	2	2		
13	51456-KPH-901	RING, STOPPER(SW)	2	2	2		
14	51466-065-901	RING, OIL SEAL STOPPER(SW)	2	2	2		
	51466-KWW-662	RING, OIL SEAL STOPPER(CU)	2	2	2		
15	51470-K25-902	PIPE, SEAT(CU)	2	2	2		
	51470-KZR-600	PIPE, SEAT(SW)	2	2	2		