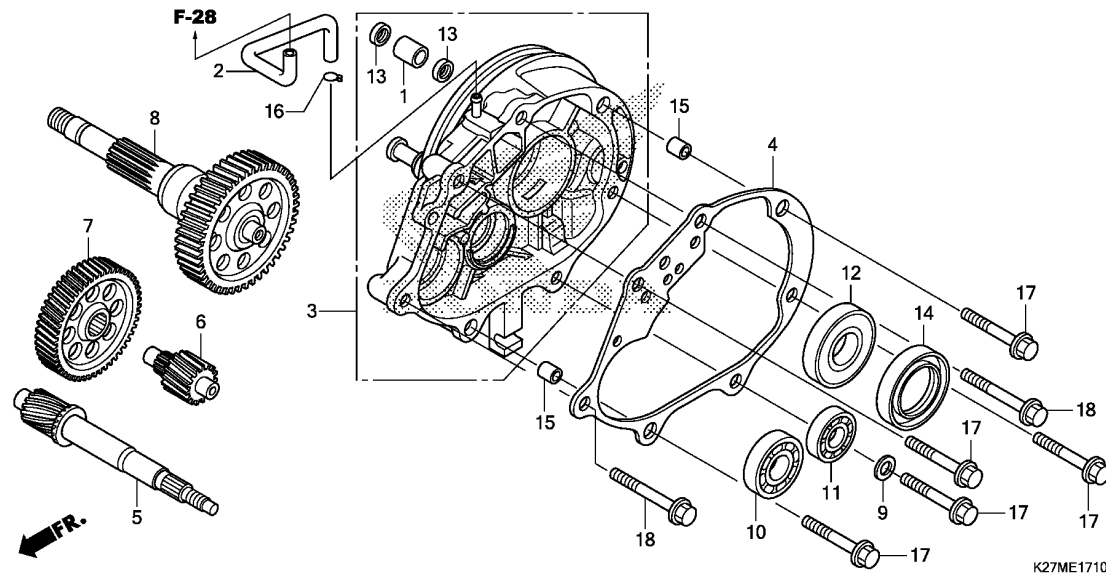


E-17-10

TRANSMISSION

D15



Ref. No.	L.O.N.	(Relative ref. Number) Description	F.R.T.
3	2101A2	CASE, TRANSMISSION	1.5
4	2101A3	GASKET, TRANSMISSION CASE	1.1
5	2101E9	SHAFT, DRIVE	1.4
6	210142	COUNTERSHAFT, TRANSMISSION ...	1.1
7	2101A5	GEAR, COUNTER	1.1
8	210170	SHAFT, FINAL GEAR	1.1
10	2101F1	BEARING, DRIVESHAFT :RIGHT ...	1.3
7	2101J1	BEARING, DRIVESHAFT :BOTH	1.5
11	2101C8	BEARING, COUNTERSHAFT :RIGHT ..	1.3
12	2101C9	BEARING, COUNTERSHAFT :BOTH ..	1.4
		(14)	
	2101E6	BEARING, FINAL GEAR SHAFT	
		:RIGHT	1.3
	2101J0	BEARING, FINAL GEAR SHAFT	
		:BOTH	1.4

Ref. No.	Part No.	Description	Reqd. QTY	Serial No.	Parts catalogue code
			ACA125CBF E		
1	11204-KGF-900	SLEEVE, RR. BRAKE CAM	1		
2	11211-KWN-980	TUBE, MISSION BREATHER	1		
3	21200-KZR-600	CASE COMP., TRANSMISSION	1		
4	21395-KZR-600	GASKET, TRANSMISSION CASE ...	1		
5	23411-KZR-600	SHAFT, DRIVE(17T)	1		
6	23421-KZR-600	COUNTERSHAFT(13T)	1		
7	23422-KWN-900	GEAR, COUNTER(53T)	1		
8	23430-K27-V00	GEAR COMP., FINAL(44T)	1		
9	90495-MN5-000	WASHER, SEALING, 8MM	1		
10	91004-KZR-601	BEARING, RADIAL BALL, 6202	1		
		(NTN)			
	91004-KZR-602	BEARING, RADIAL BALL, 6202	1		
		(FUJIKOSHI)			
11	91006-KAB-004	BEARING, RADIAL BALL,	1		
		6205-2NSG			
	91009-KWN-901	BEARING, RADIAL BALL, 6205 UU	1		
12	91006-KZR-601	BEARING, RADIAL BALL, 6201	1		
		(NTN)			
	91006-KZR-602	BEARING, RADIAL BALL, 6201	1		
		(FUJIKOSHI)			
13	91201-434-003	OIL SEAL, 14X20X3.2	2		
14	91204-KWN-900	OIL SEAL, 34X52X7	1		
15	94301-10120	DOWEL PIN, 10X12	2		
16	95002-50000	CLIP, TUBE(C9)	1		
17	95701-08045-00	BOLT, FLANGE, 8X45	5		
18	95701-08055-00	BOLT, FLANGE, 8X55	2		

