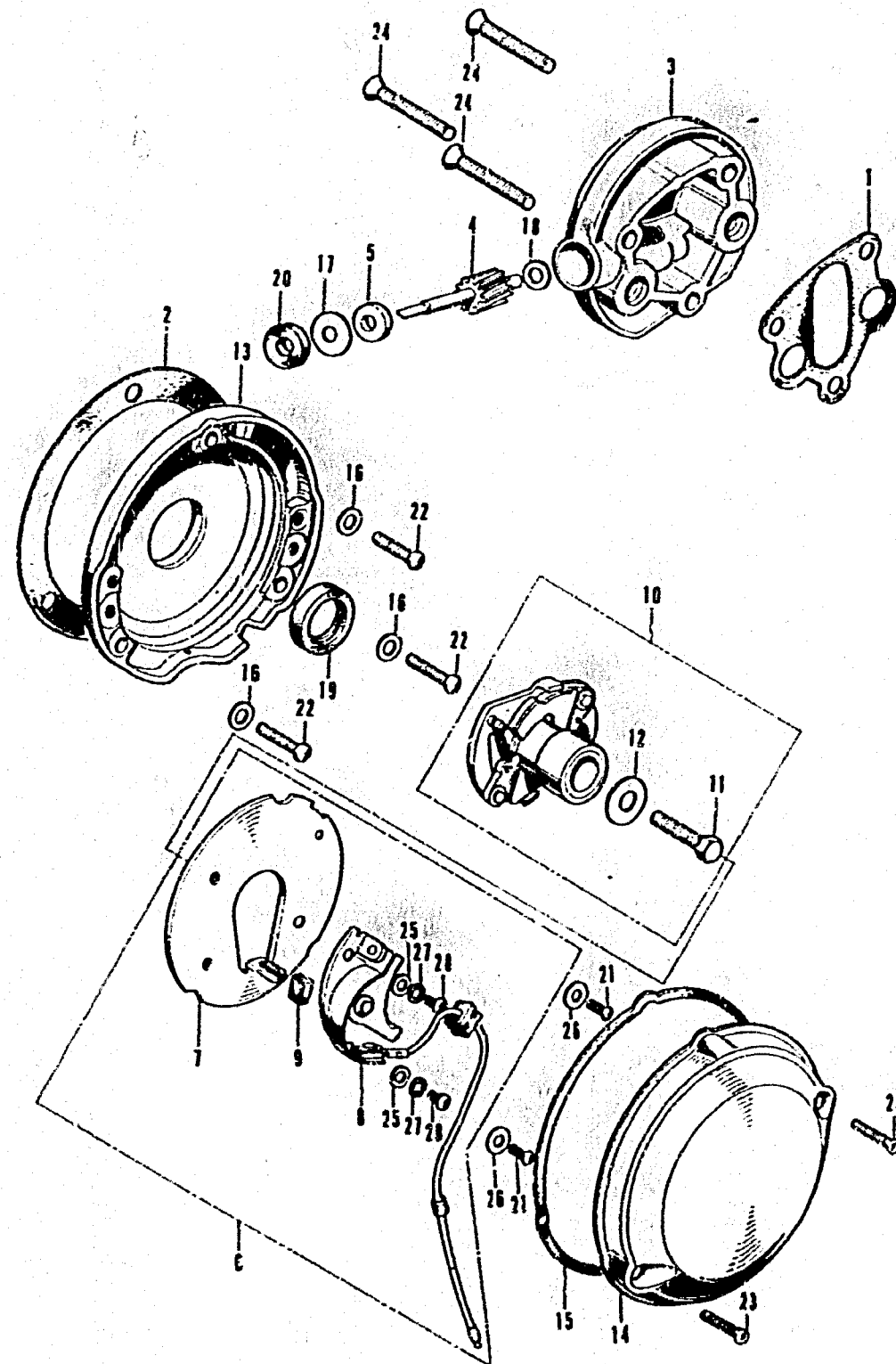


E-2 Contact breaker · Spark advancer

C 3

E-2 Contact breaker · Spark advancer



Ref. No.	Part No.	Description	Reqd. No. CB125K5	Serial No.	Area code
1	12394-246-020	GASKET, TACHOMETER GEAR BOX	1		
2	12396-246-020	GASKET, POINT BASE	1		
3	12411-304-000	BOX, TACHOMETER GEAR	1		
4	12431-246-000	GEAR, TACHOMETER	1		
5	12435-246-000	COLLAR, TACHOMETER GEAR THRUST	1		
6	30200-303-003	BREAKER ASSY., CONTACT (KOKUSAN)	1		
	30200-303-004	BREAKER ASSY., CONTACT (ND)	1		
	30200-303-154	BREAKER ASSY., CONTACT (TOYO)	1	5024446	
7	30201-246-003	PLATE, CONTACT BREAKER BASE (KOKUSAN)	1		
	30201-246-004	PLATE, CONTACT BREAKER BASE (ND)	1		
8	30202-028-003	BREAKER, CONTACT (KOKUSAN)	1		
	30202-216-004	BREAKER, CONTACT (ND)	1		
	30202-107-004	BREAKER, CONTACT (ND)	1		
9	30205-205-003	FELT, OIL (KOKUSAN)	1		
	30205-205-014	FELT, OIL (ND)	1		
10	30220-303-014	ADVANCER ASSY., SPARK (ND)	1		DK, D/I
	30220-303-154	ADVANCER ASSY., SPARK (TOYO)	1	5024446	DK, DM
	30220-304-154	ADVANCER ASSY., SPARK (TOYO)	1	5024446	ED, F, G
	30220-304-610	ADVANCER ASSY., SPARK	1		ED, F, G
11	30225-246-004	BOLT, SPARK ADVANCER SETTING	1		
12	30226-246-004	WASHER, SPARK ADVANCER SETTING	1		
13	30361-246-030	BASE, POINT	1		
14	30371-246-300	BODY, POINT COVER	1		
15	30372-246-300	GASKET, POINT COVER	1		
16	90441-028-010	WASHER, SEALING, 6MM	3		
17	90458-286-000	WASHER, TACHOMETER GEAR THRUST	1		
18	90539-011-000	WASHER, SPEEDMETER PINION	1		
19	91201-246-003	OIL SEAL, 15X24X5	1		
	91201-246-005	OIL SEAL, 15X24X5	1	5021614	
20	91211-286-003	OIL SEAL, 4.8X14.5X4	1		
21	93500-05008-0A	SCREW, PAN, 5X8	2		
22	93500-06020	SCREW, PAN, 6X20	3		
23	93700-05016-0A	SCREW, OVAL, 5X16	2		
24	93700-06032	SCREW, OVAL, 6X32	3		
25	94101-04000	WASHER, PLAIN, 4MM	2		
26	94101-05000	WASHER, PLAIN, 5MM	2		
27	94111-04000	WASHER, SPRING, 4MM	2		
28	99500-04006-0A	SCREW, HOLDUP PAN, 4X6	2		

B336-2