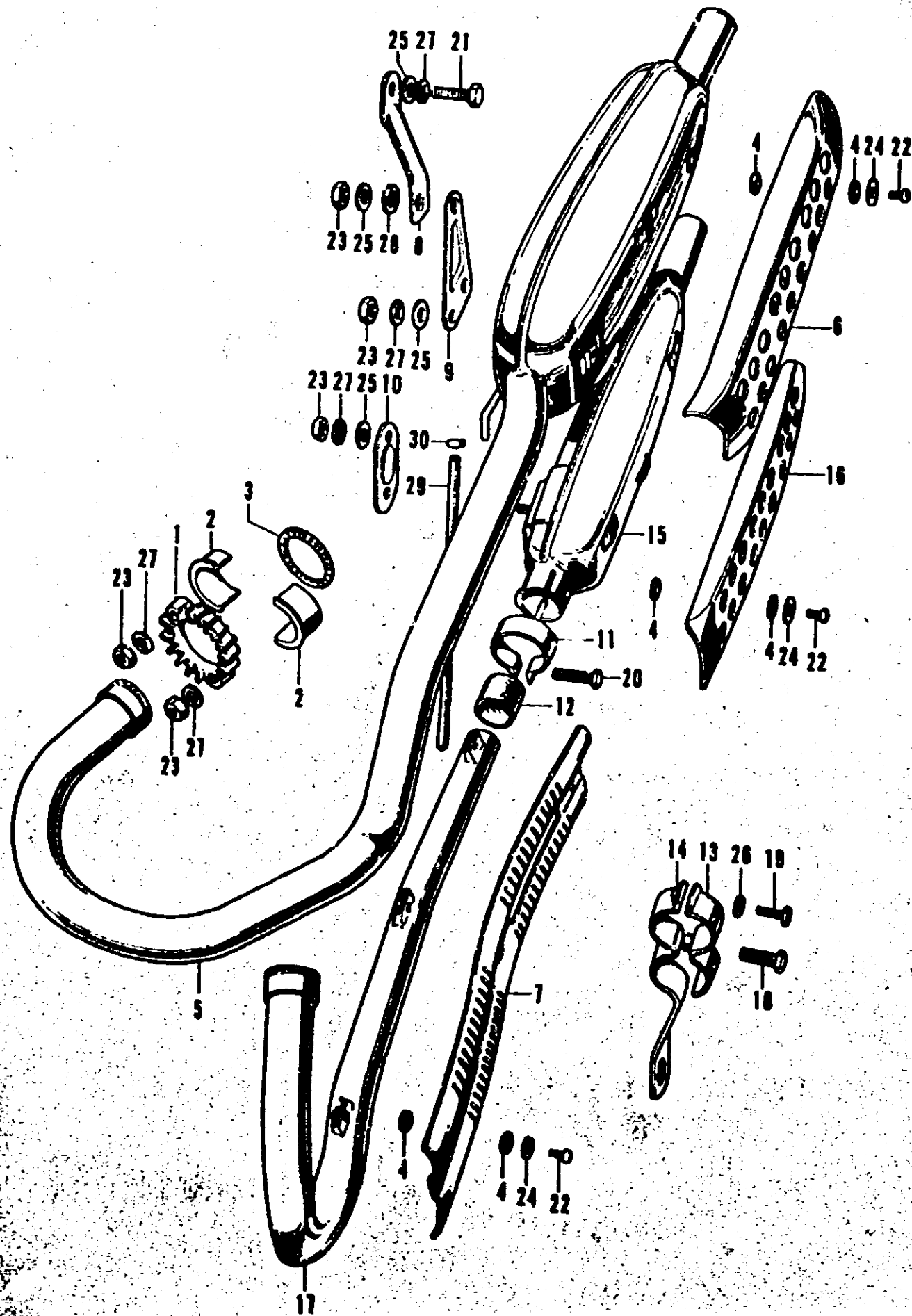


E 13

F-15 Exhaust Muffler

F-15 Exhaust Muffler



Ref. No.	Part No.	Description	Reqd. No.		Remarks
			250K2	350K2	
1	18231-286-030	(Superseded by 18231-312-000)			
	18231-312-000	JOINT, exhaust pipe	2	2	CL250-3004308~ CL350-2029575~
2	18233-318-000	COLLAR, exhaust pipe joint	4	4	
3	18291-286-000	GASKET, exhaust pipe	2	2	
4	18292-290-000	PACKING, protector	18	18	
5	18300-318-010	MUFFLER COMP., right exhaust	1	1	
6	18315-318-000	PROTECTOR, right muffler	1	1	
7	18325-318-000	PROTECTOR, exhaust pipe	1	1	
8	18340-318-010	STAY, rear muffler hanger	1	1	
9	18343-318-000	STAY, rear muffler setting	1	1	
10	18345-318-000	STAY, front muffler setting	1	1	
11	18371-294-000	BAND, muffler	1	1	
12	18391-318-000	PACKING, muffler	1	1	
13	18396-290-010	HOLDER A, exhaust pipe	1	1	
14	18397-318-000	HOLDER C, exhaust pipe	1	1	
15	18410-318-010	MUFFLER COMP., left	1	1	
16	18415-318-000	PROTECTOR, left muffler	1	1	
17	18420-318-000	PIPE, left exhaust	1	1	
18	90165-318-000	BOLT, hex., special, 8x32	1	1	
19	92000-06014-02	BOLT, hex., 6x14	1	1	
20	92000-06020	BOLT, hex., 6x20	1	1	
21	92000-08025-0A	BOLT, hex., 8x25	1	1	
22	93500-06014-09	SCREW, pan, 6x14	9	9	
23	94001-08000-0S	NUT, hex., 8 mm	9	9	
24	94101-06000	WASHER, plain, 6 mm	9	9	
25	94101-08000	WASHER, plain, 8 mm	6	6	
26	94111-06000	WASHER, spring, 6 mm	1	1	
27	94111-08000	WASHER, spring, 8 mm	9	9	
28	94111-12000	WASHER, spring, 12 mm	1	1	
29	95001-50250	TUBE, fuel, 5x250	1	1	
30	95002-50000	CLIP, fuel tube, 5	1	1	