

**M 1**

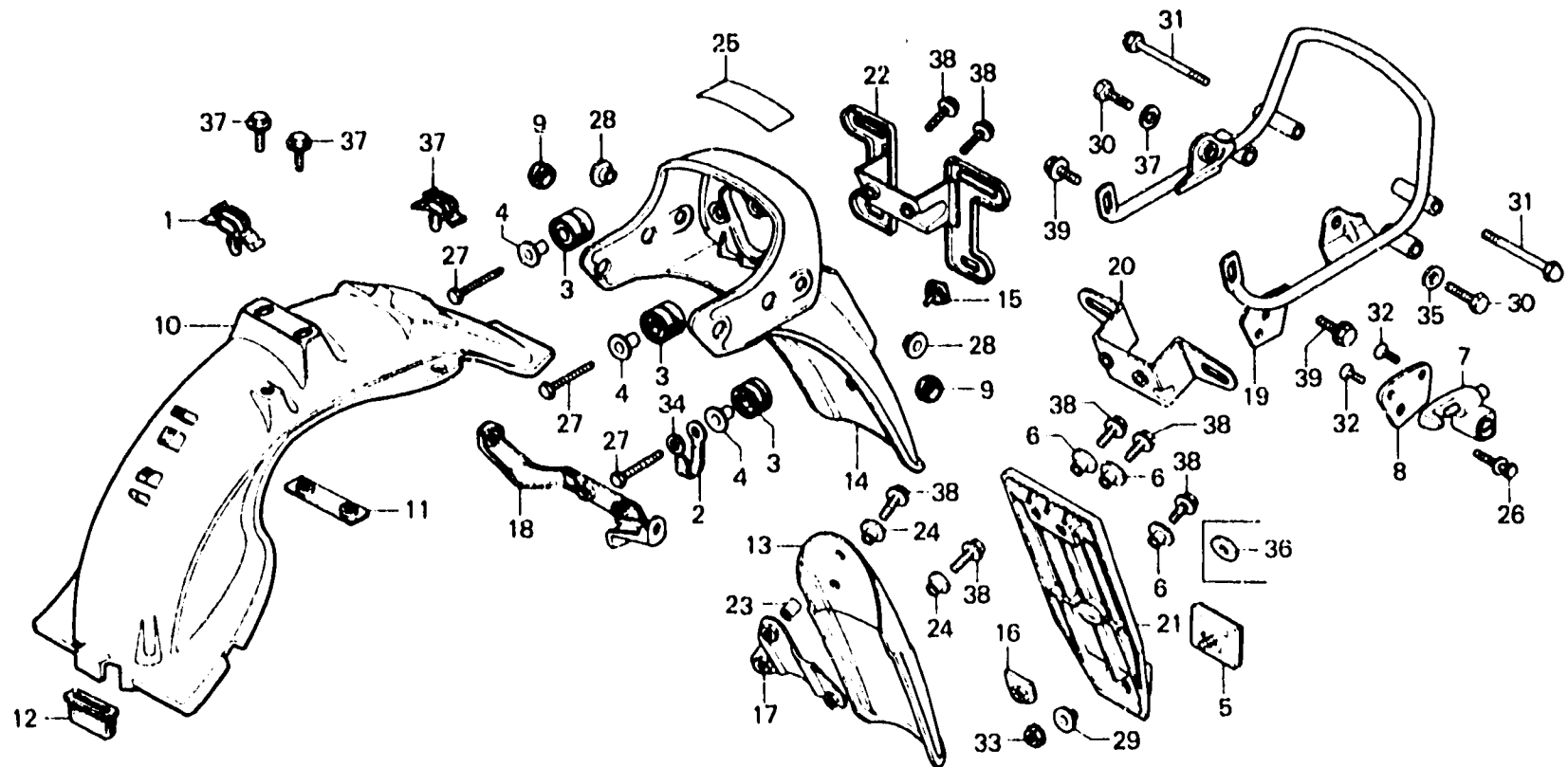
**F-26**

Rear fender

Garde-boue arrière

Hinterer Kotflügel

Parafango trasero



E41548

| Item d'entretien | T.D.R. | N° de réf. | N° de pièce     | Description                 | N° de requis |   |         | N° de série                  | Code de zone |
|------------------|--------|------------|-----------------|-----------------------------|--------------|---|---------|------------------------------|--------------|
|                  |        |            |                 |                             | CX500        | Z | DZ CZ   |                              |              |
|                  |        | 14         | 80500-415-000ZA | AUVENT AP. *R-33*           | 1            |   |         | CM,DK,DM,E,F,G,G2,IT,SA<br>U |              |
|                  |        |            | 80500-415-000ZB | AUVENT AR. *PB-3C-C*        | 1            |   |         | CM,DK,DM,E,F,G,G2,IT,SA<br>U |              |
|                  |        |            | 80500-415-000ZD | AUVENT AR. *NH-1*           | 1            | 1 |         | CM,DK,DM,E,F,G,G2,IT,SA<br>U |              |
|                  |        |            | 80500-415-000ZE | AUVENT AR. *R-8C-S*         | 1            | 1 | 1       | CM,DK,DM,E,F,G,G2,IT,SA<br>U |              |
|                  |        |            | 80500-415-640ZA | AUVENT AR. *R-33*           | 1            |   |         | ED                           |              |
|                  |        |            | 80500-415-640ZB | AUVENT AR. *PB-3C-C*        | 1            |   |         | ED                           |              |
|                  |        |            | 80500-415-640ZD | AUVENT AP. *NH-1*           | 1            |   |         | ED                           |              |
|                  |        |            | 80500-415-640ZE | AUVENT AR. *R-8C-S*         | 1            |   |         | ED                           |              |
|                  |        | 15         | 80501-415-000   | BOUCHON D'AUVENT AR.        | 1            | 1 | 1       | CM,DK,DM,SA,U                |              |
|                  |        | 16         | 80504-415-610   | PIECE D'AUVENT AR.          | 1            |   |         | E,F,G,G2,IT                  |              |
|                  |        | 17         | 80504-415-640   | PIECE D'AUVENT AR.          | 1            |   |         | ED                           |              |
|                  |        | 18         | 80510-415-000   | SUPPORT D'AUVENT AR.        | 1            | 1 | 1       |                              |              |
|                  |        | 19         | 84101-415-000   | PARE-CHOC AR.               | 1            | 1 | 1       |                              |              |
|                  |        | 20         | 84701-415-000   | SUPPORT DE PLAQUE DE NUMERO | 1            |   |         | 2050647 DK,DM,SA,U           |              |
|                  |        |            | 84701-415-650   | SUPPORT DE PLAQUE DE NUMERO | 1            |   | 2050648 | DK,DM,SA,U                   |              |