

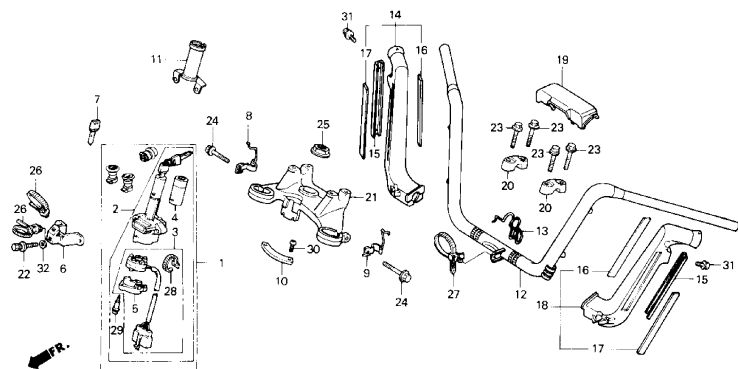
Catalog Title:

GL1500 '88 '89 '90 GL1500SE '90 '91 GL1500A '91 GL1500I '91 F 07

Block No.

Block Title:

HANDLEBAR



Ref. No.	Part No.	Description
1	35010-MN5-010	LOCK SET '88'89'90
1	35010-MN5-020	LOCK SET '88'89'90
1	35010-MT8-770	LOCK SET -SE'90
1	35010-MT8-771	LOCK SET -SE'90'91, A'91
1	35010-MW5-870	LOCK SET - I'91
2	35100-MN5-013	SWITCH ASSY. '88'89'90
2	35100-MN5-023	SWITCH ASSY. '88'89'90
2	35100-MT8-770	SWITCH ASSY. - SE'90
2	35100-MT8-771	SWITCH ASSY.- ALL '91, SE'90
3	35101-MN5-003	BASE COMP., CONTACT '88'89'90
3	35101-MN5-013	BASE COMP., CONTACT '88'89'90
3	35101-MT8-771	BASE COMP., CONTACT- ALL '91, SE'90
4	35102-MT8-770	CAP- ALL '91, SE'90
5	35105-MG9-681	COVER, SWITCH '88'89'90
5	35105-MT8-770	COVER, SWITCH- ALL '91, SE'90
6	35105-MN5-000	STAY
7	35121-MN5-810	KEY, BLANK (TYPE1)- '88'89'90-SE'90, ALL91
7	35122-MN5-810	KEY, BLANK (TYPE2) - '88'89'90-SE'90, ALL91
7	35121-KW3-771	KEY, BLANK (TYPE1) - I'91
7	35122-KW3-771	KEY, BLANK (TYPE2) - I'91
8	45158-MN5-000	CLAMP, R. HOSE
9	45159-MN5-000	CLAMP, L. HOSE

Selection table for lock or blank key

Refer to the following selection table to select the lock or blank key.

Type	Key No.
TYPE 1	A** B**
TYPE 2	C** D**

* 0, 1, 2, 3, 4, 5, 6, 7, 8 or 9