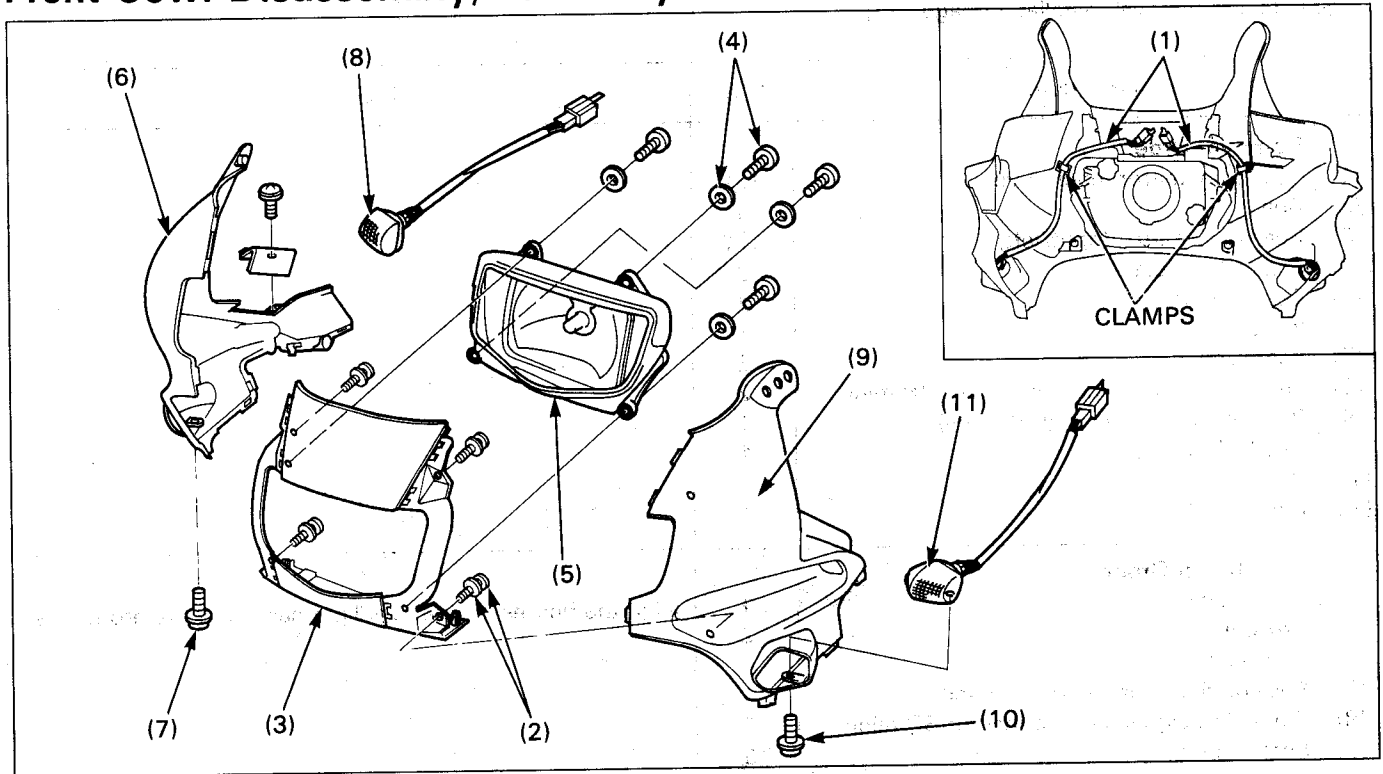


Front Cowl Disassembly/Assembly



Requisite Service

- Front cowl removal/installation (page 2-4)

Procedure	Q'ty	Remarks
Disassembly Order		Assembly is in the reverse order of disassembly.
(1) Turn signal light wire	2	Release the wires from the carmps. After assembling the front cowl, route and clamp the wires properly.
(2) Screw/washer	4/4	
(3) Center front cowl	1	
(4) -screw/washer	4/4	
(5) -headlight assembly	1	
(6) Right front cowl	1	
(7) -screw	1	
(8) -right turn signal light	1	
(9) Left front cowl	1	
(10) -screw	1	
(11) -left turn signal light	1	