

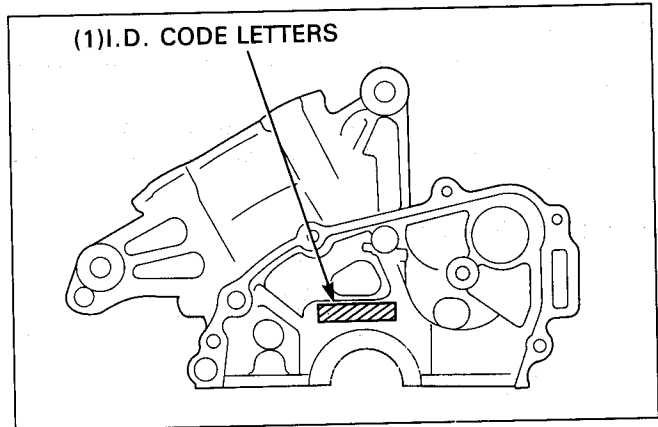
Crankshaft Bearing Replacement

Main Journal Bearing Selection

Record the crankcase I.D. code letters stamped on the left side of the upper crankcase.

NOTE

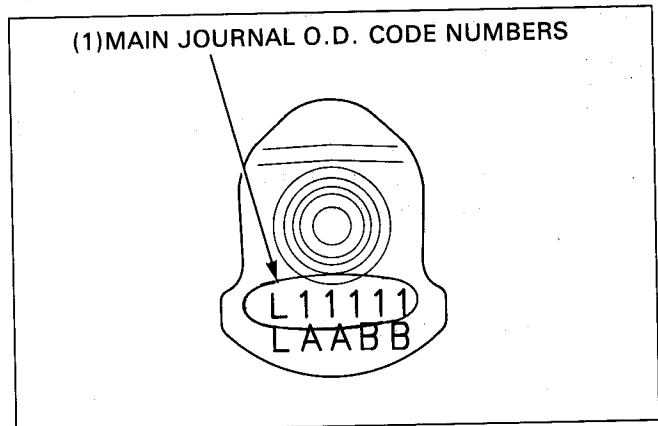
- Letters (A, B or C) on the upper crankcase are the codes for the main journal I.D.s from the left side.



Record the corresponding main journal O.D. code numbers from the crank weight.

NOTE

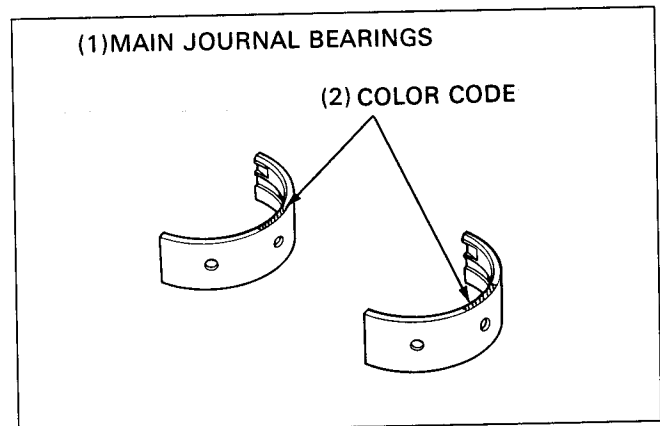
- Numbers (1 or 2) on the crank weight are the codes for the main journal O.D.s from the left.



Cross reference the case and journal codes to determine the replacement bearing color code.

Crankcase I.D. code / Main journal O.D. code		A	B	C
		36.000-36.008 mm (1.4173-1.4176 in)	36.008-36.016 mm (1.4176-1.4180 in)	36.016-36.024 mm (1.4180-1.4183 in)
1	32.992-33.000 mm (1.2989-1.2992 in)	D (Pink)	C (Yellow)	B (Green)
2	32.984-32.992 mm (1.2986-1.2989 in)	C (Yellow)	B (Green)	A (Brown)

- A : Brown : 1.492-1.496 mm (0.0587-0.0589 in)
- B : Green : 1.488-1.492 mm (0.0586-0.0587 in)
- C : Yellow : 1.484-1.488 mm (0.0584-0.0586 in)
- D : Pink : 1.480-1.484 mm (0.0583-0.0584 in)



Connecting Rod Bearing Selection

Record the connecting rod I.D. code numbers on the rods.

NOTE

- Numbers (1 or 2) on the connecting rods are the codes for the connecting rod I.D.s.

