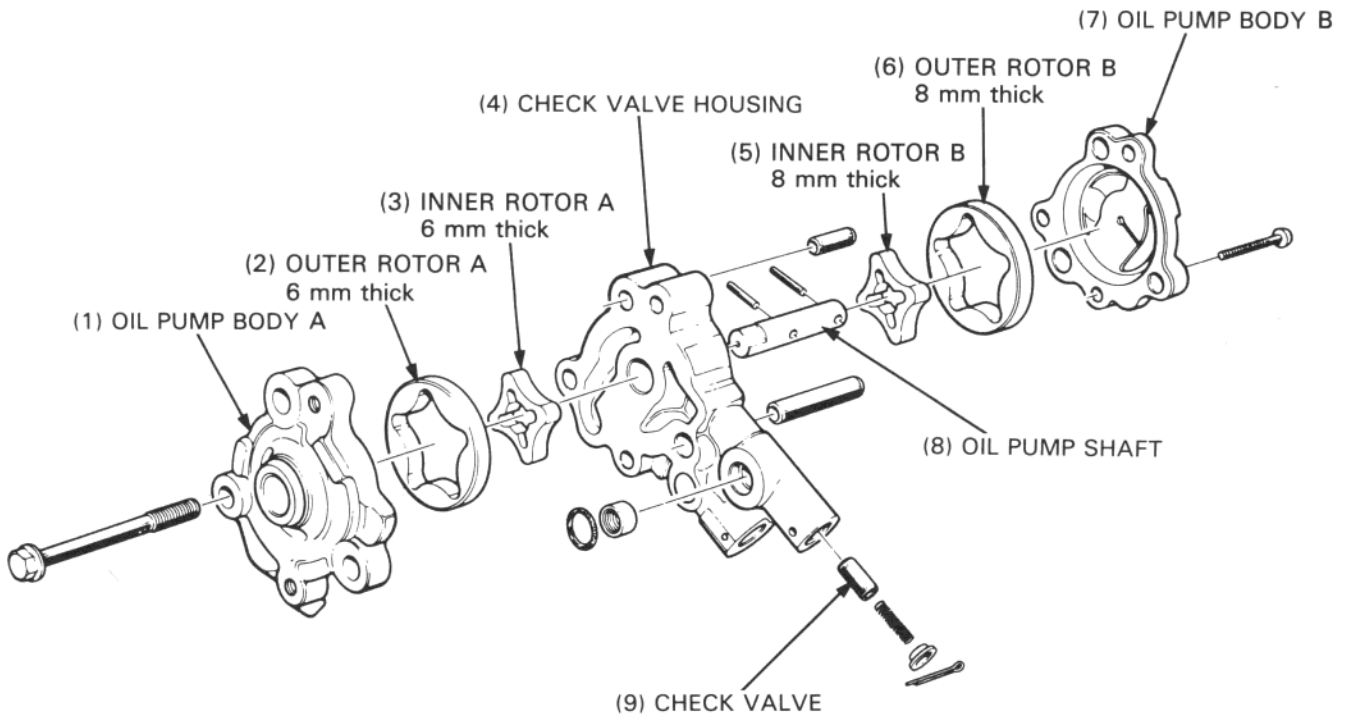
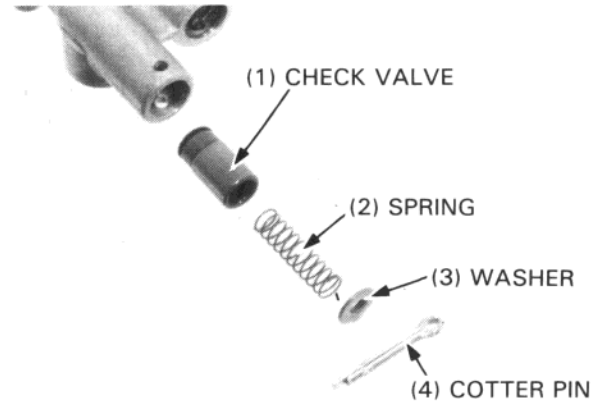


LUBRICATION

ASSEMBLY



Install the check valve, spring, and washer with a new cotter pin.



Install the inner and outer rotor As into the oil pump body A.

CAUTION

- The inner and outer rotor As are thinner than the rotor Bs. Do not interchange the rotors A and B when assembling.

Press the lock pin in the pump shaft, then slip the pump shaft into place.
Install the check valve housing.

